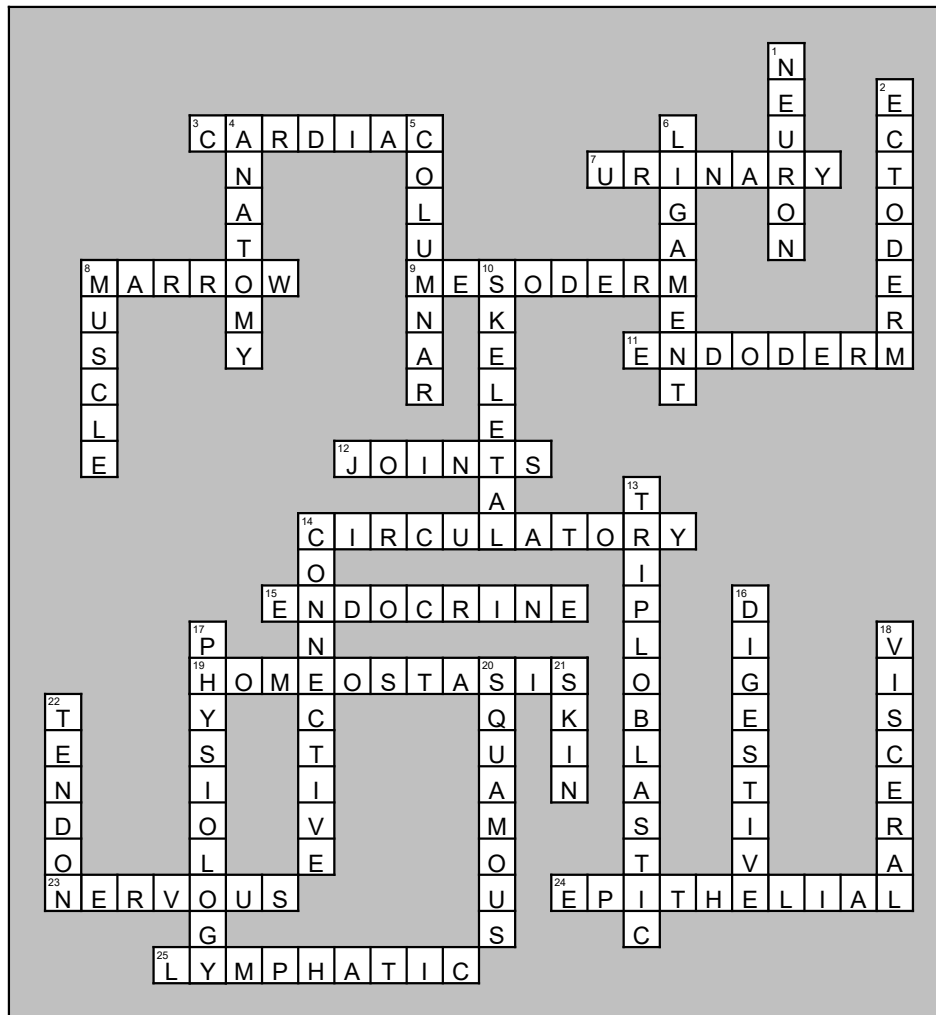


Crossword



Across

3. Heart muscle; involuntary. Striated.
7. System that removes waste products from the blood (urine) to regulate pH & water balance.
8. Part of bone that produces blood cells, platelets, fat, and cartilage.
9. Germ layer for heart, kidneys, bones, cartilage, muscles, blood cells & vessels.
11. Germ layer for the linings of the respiratory and digestive tracts, liver, pancreas, and bladder.
12. Ball & socket, hinge, gliding, saddle, and pivot.
14. System that delivers oxygen and nutrients to body cells and carries waste to the kidneys.
15. System that secretes hormones to regulate body functions.
19. The active maintenance of a steady state within the body relating to pH, temperature, and physiological functions due to external factors.
23. Tissue that allows communication with other tissues through electrical signals.
24. Tissue covering surfaces of the body and internal organs and cavities.
25. System (along with immune) that protects the body from "foreign" invaders like infection and cancer.

Down

1. Composed of dendrites, axons, and cell body.
2. Germ layer for brain, spinal cord, nerves, skin, nails, hair.
4. Study of structure.
5. Tall epithelial cells in many organs of the body.
6. Bone to bone connective tissue.
8. Tissue including skeletal, smooth, and cardiac.
10. Voluntary muscles anchored by tendons, affecting movement and posture.
13. Term for germ layers in humans (ectoderm, mesoderm, endoderm).
14. Tissue that binds and supports other tissues: loose, fibrous, bone, blood, adipose, and cartilage.
16. System that ingests and breaks down food, absorbs nutrients, and eliminates waste.
17. Study of Function.
18. "Smooth" muscle; weakest; found inside organs. Involuntary.
20. Epithelial cells that form the lining of many organs; facing the open space (cavity).
21. Protects internal organs, regulates body temperature, and excretes liquid waste (sweat). Epidermis, dermis, fat layer.
22. Bone to muscle connective tissue.